


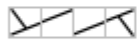
November 2008 – January 2009
 Pattern Updates/Clarifications

Lough Corrib – Aran Sweater – page 35

Chart A-1

	4	3	2	1	
4					
					3
2					
				1	

Legend:



c2 over 2 right

RS: sl2 to CN, hold in back. k2, k2 from CN
 WS: none defined




knit

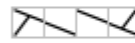
RS: knit stitch
 WS: purl stitch

Created in Knit Visualizer (www.knitfoundry.com)

Chart A-2

	4	3	2	1	
4					
					3
2					
				1	

Legend:



c2 over 2 left

RS: sl 2 to CN, hold in front. k2, k2 from CN
 WS: none defined




knit

RS: knit stitch
 WS: purl stitch

Created in Knit Visualizer (www.knitfoundry.com)

Chart C

	5	4	3	2	1	
8						
						7
6						
						5
4						
						3
2						
	●	●	●	●	●	1

Legend:



purl

RS: purl stitch
 WS: knit stitch



knit

RS: knit stitch
 WS: purl stitch



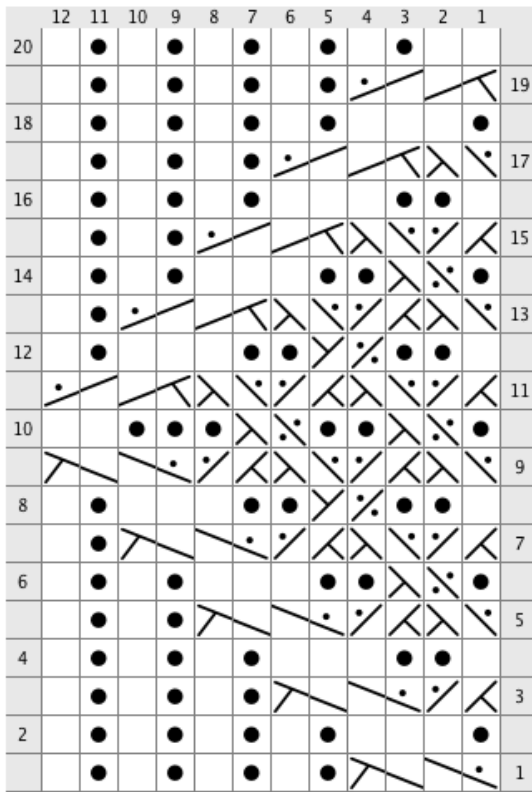
4-Stitch Bobble

RS: To make bobble, (k1, p1, k1, p1) in next st. Slip second st

Created in Knit Visualizer (www.knitfoundry.com)


Continued on next page.


Chart B-1





Legend:


- 
c2 over 2 left P
 RS: sl 2 to CN, hold in front. p2, k2 from CN

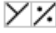
- 
purl
 RS: purl stitch
 WS: knit stitch

- 
knit
 RS: knit stitch
 WS: purl stitch

- 
Right Twist, purl bg
 RS: sl1 to CN, hold in back. k1, p1 from CN

- 
Left Twist, purl bg
 RS: sl1 to CN, hold in front. p1. k1 from CN

- 
Purled Left Twist
 RS: sl1 to CN and hold to front. p1, p1 from CN

- 
Purled Right Twist
 RS: sl1 to CN, hold in back. p1, p1 from CN. OR p into 2nd st, then p 1st st

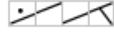
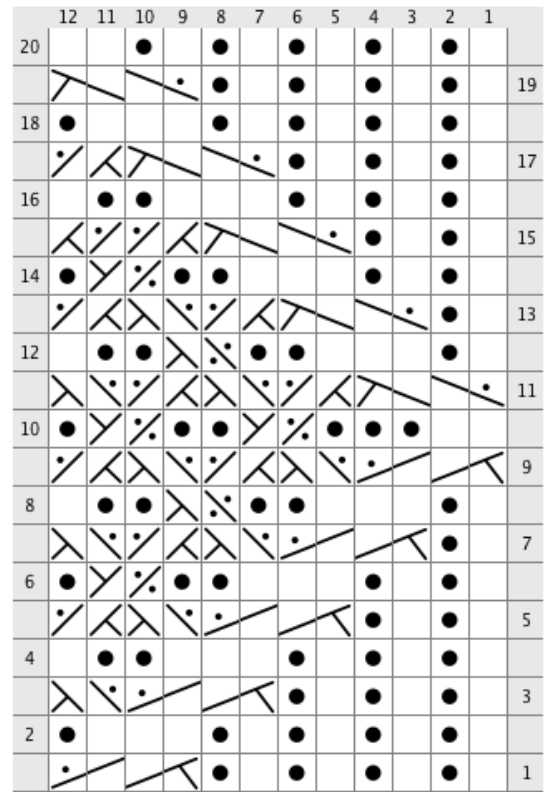


- 
c2 over 2 right P
 RS: sl2 to CN, hold in back. k2, p2 from CN

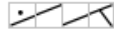
Chart B-2




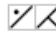
Legend:


- 
knit
 RS: knit stitch
 WS: purl stitch


- 
purl
 RS: purl stitch
 WS: knit stitch


- 
c2 over 2 right P
 RS: sl2 to CN, hold in back. k2, p2 from CN

- 
Left Twist, purl bg
 RS: sl1 to CN, hold in front. p1. k1 from CN

- 
Right Twist, purl bg
 RS: sl1 to CN, hold in back. k1, p1 from CN

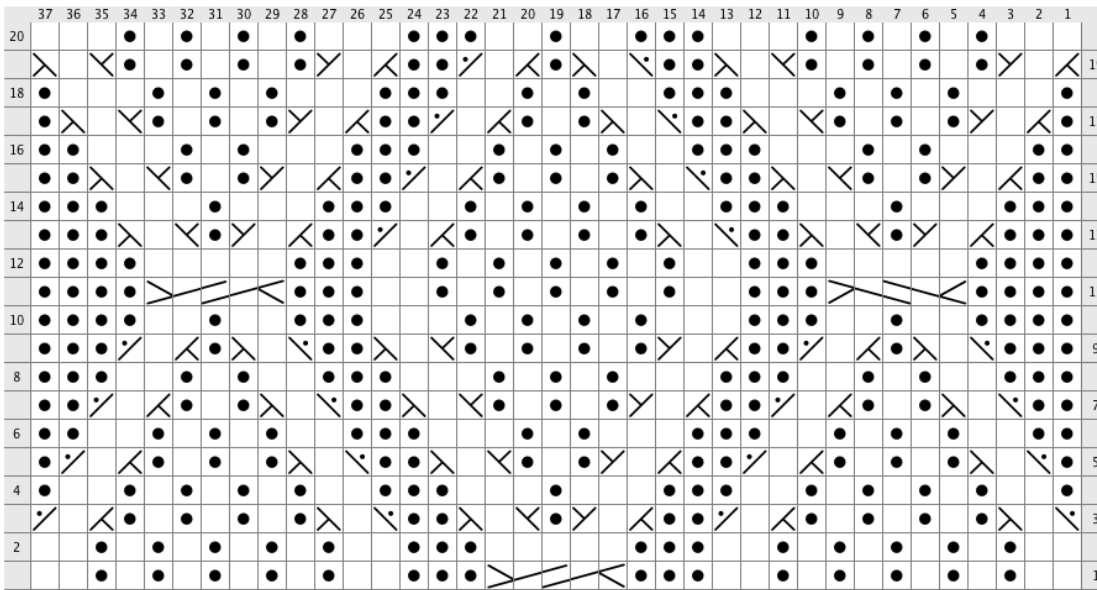
- 
Purled Right Twist
 RS: sl1 to CN, hold in back. p1, p1 from CN. OR p into 2nd st, then p 1st st

- 
Purled Left Twist
 RS: sl1 to CN and hold to front. p1, p1 from CN


- 
c2 over 2 left P
 RS: sl 2 to CN, hold in front. p2, k2 from CN


Continued on next page.


Chart D




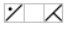
Legend:

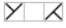
- 
knit
 RS: knit stitch
 WS: purl stitch


- 
purl
 RS: purl stitch
 WS: knit stitch


- 
c2 over 3 right
 RS: s13 to CN, hold in back. k2, then k3 from CN
 WS: none defined

- 
c2 over 1 left P
 RS: s12 to CN, hold in front. p1, k2 from CN
 WS: s12 to CN, hold in front. p1, k2 from CN

- 
c2 over 1 right P
 RS: s11 to CN, hold in back. k2, p1 from CN
 WS: s11 to CN, hold in back. k2, p1 from CN

- 
c2 over 1 right
 RS: s11 to CN, hold in back. k2, k1 from CN
 WS: s11 to CN, hold in back. k2, k1 from CN

- 
c2 over 1 left
 RS: s12 to CN, hold in front. k1, k2 from CN
 WS: s12 to CN, hold in front. k1, k2 from CN

- 
c2 over 3 left
 RS: s12 to CN, hold in front. k3, k2 from CN
 WS: none defined

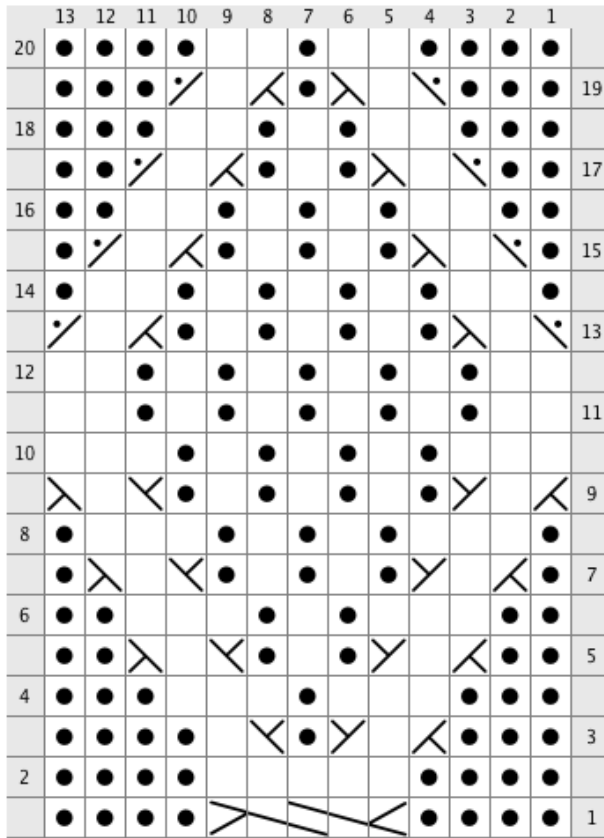
Created in Knit Visualizer (www.knitfoundry.com)

Notes:


Alternate direction of twist in 2-over-3 cable of central motif.


Continued on next page.

Chart E-1

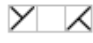


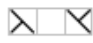
Legend:

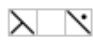
 **purl**
RS: purl stitch
WS: knit stitch

 **c2 over 3 left**
RS: sl2 to CN, hold in front. k3, k2 from CN

 **knit**
RS: knit stitch
WS: purl stitch

 **c2 over 1 right**
RS: sl1 to CN, hold in back. k2, k1 from CN

 **c2 over 1 left**
RS: sl2 to CN, hold in front. k1, k2 from CN

 **c2 over 1 left P**
RS: sl2 to CN, hold in front. p1, k2 from CN

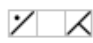
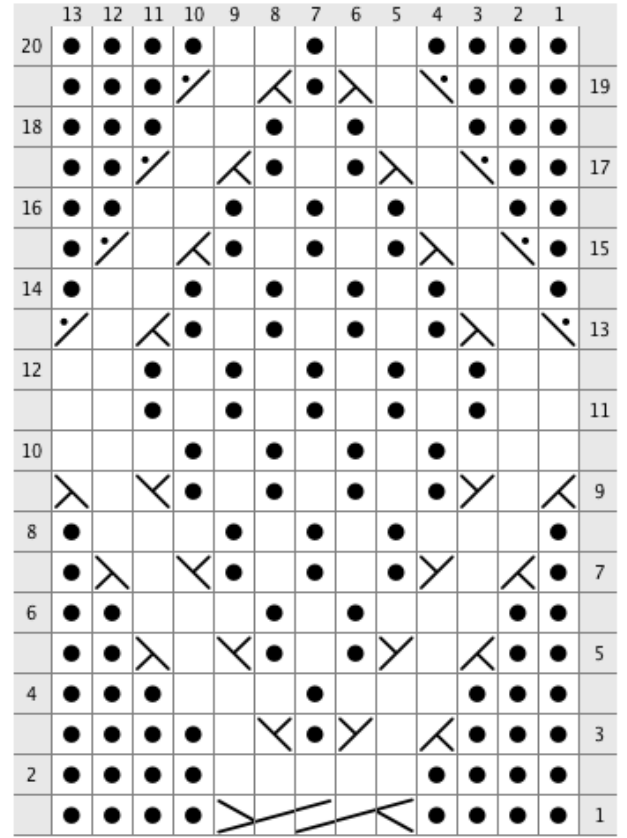


 **c2 over 1 right P**
RS: sl1 to CN, hold in back. k2, p1 from CN

Chart E -2





Legend:


 **purl**
RS: purl stitch
WS: knit stitch

 **c2 over 3 right**
RS: sl3 to CN, hold in back. k2, then k3 from CN

 **knit**
RS: knit stitch
WS: purl stitch

 **c2 over 1 right**
RS: sl1 to CN, hold in back. k2, k1 from CN

 **c2 over 1 left**
RS: sl2 to CN, hold in front. k1, k2 from CN

 **c2 over 1 left P**
RS: sl2 to CN, hold in front. p1, k2 from CN

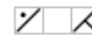
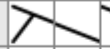
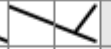
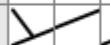
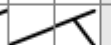
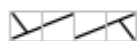
 **c2 over 1 right P**
RS: sl1 to CN, hold in back. k2, p1 from CN

Chart F-1

	4	3	2	1	
8					
					7
6					
					5
4					
					3
2					
					1

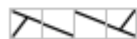
Legend:



c2 over 2 right
 RS: sl2 to CN, hold in back. k2, k2 from CN
 WS: none defined



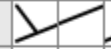
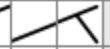
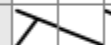
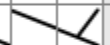
knit
 RS: knit stitch
 WS: purl stitch



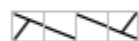
c2 over 2 left
 RS: sl 2 to CN, hold in front. k2, k2 from CN

Created in Knit Visualizer (www.knitfoundry.com)

Chart F-2

	4	3	2	1	
8					
					7
6					
					5
4					
					3
2					
					1

Legend:



c2 over 2 left
 RS: sl 2 to CN, hold in front. k2, k2 from CN
 WS: none defined



knit
 RS: knit stitch
 WS: purl stitch



c2 over 2 right
 RS: sl2 to CN, hold in back. k2, k2 from CN

Created in Knit Visualizer (www.knitfoundry.com)

Chart G

	10	9	8	7	6	5	4	3	2	1	
4											
					●	●					3
2											
		●	●					●	●		1

Legend:



knit
 RS: knit stitch
 WS: purl stitch



purl
 RS: purl stitch
 WS: knit stitch

Created in Knit Visualizer (www.knitfoundry.com)